



Real Mining. Real People. Real Difference.

# DARTBROOK COMMUNITY CONSULTATIVE COMMITTEE

12 November 2015

A stylized topographic map of a mountainous region, rendered in light yellow and orange lines, serving as a background for the lower half of the slide.

**CONFIDENTIAL**

## **AGENDA**

### **1 Opening and Apologies**

### **2 Declaration of Pecuniary Interest**

### **3 Correspondence**

### **4 Confirmation of previous Minutes**

### **5 Business Arising**

### **6 Complaints Summary**

### **7 General Business**

- Environmental Monitoring
- Exploration Programme
- Current & Ongoing issues
- Action from previous minutes

### **8 Other Business**

- EPA's Air Quality Monitoring network
- Other

### **9 Next Meeting**

### **10 Meeting Close**

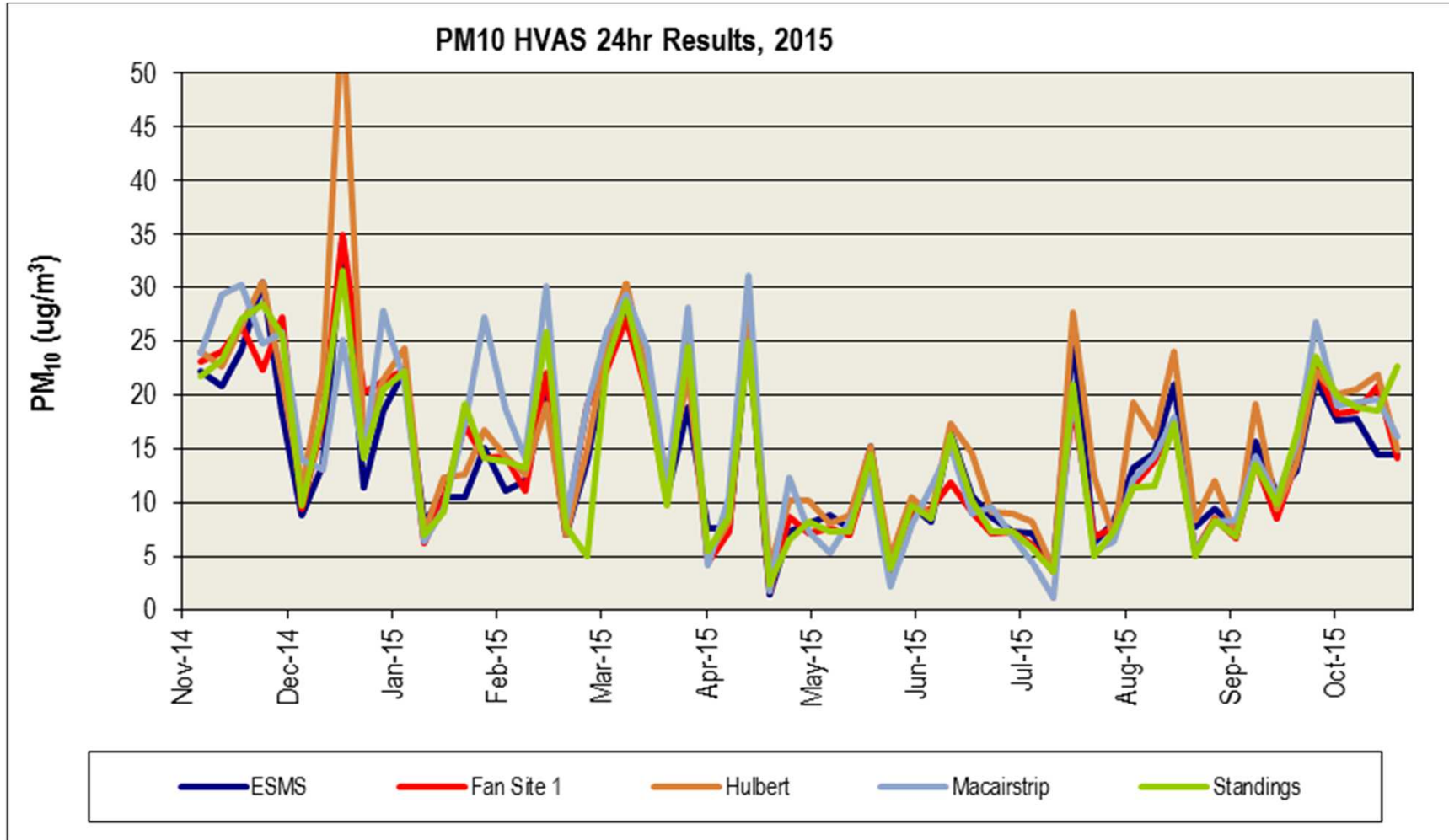


## **GENERAL BUSINESS - MONITORING**

---

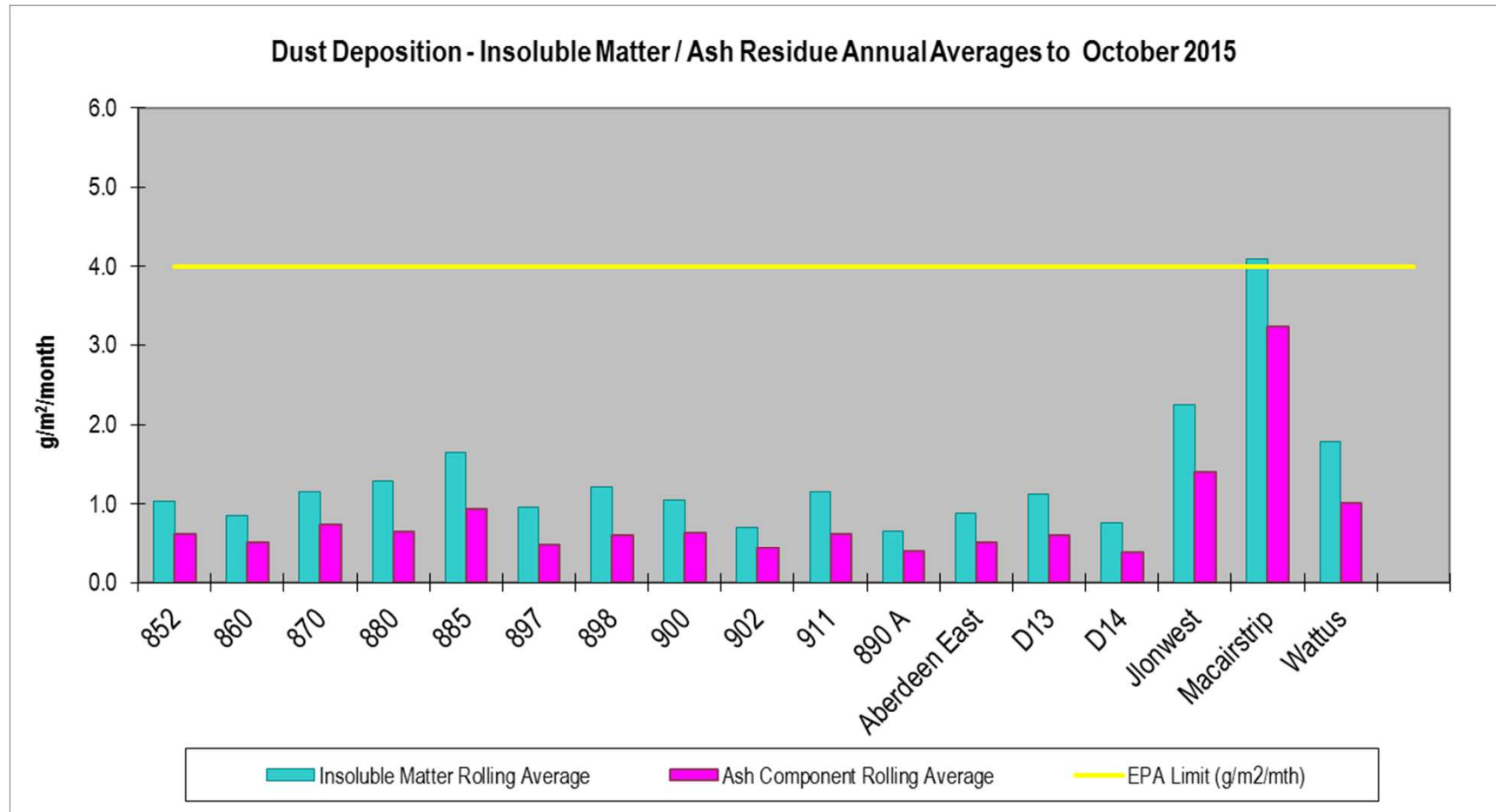
- **Rehabilitation & Biodiversity – completed**
  
- **High Volume Air Sampling**
  
- **Dust Deposition**
  
- **Dust Isopleth**
  
- **Surface Water – Hunter River Salinity**
  
- **Surface Water – Dart Brook Salinity**
  
- **Rainfall**

## 2015 HIGH VOLUME AIR SAMPLER DUST MONITORING



PM10 (Particulate Matter  $<10\mu\text{m}$ ) NEPC guideline limit is  $50\mu\text{g}/\text{m}^3$

## DEPOSITIONAL DUST MONITORING.



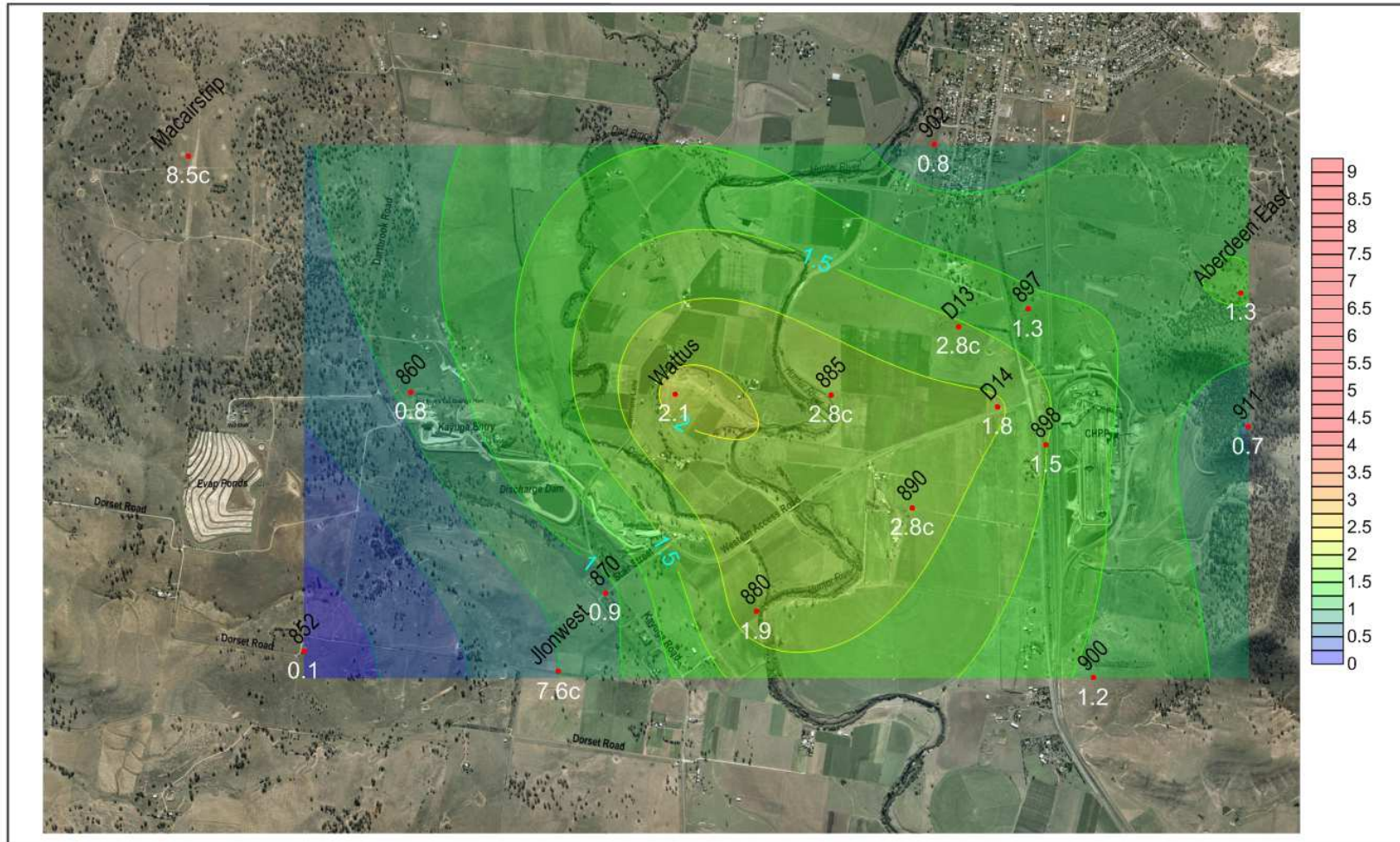
Insoluble Matter is Ash + Combustible Matter

Ash is more representative of dust component, remainder is typically organic matter (e.g. insects)

Annual average below limit of 4g/m<sup>2</sup>/month at all sites

## DUST ISOPLETH FOR OCTOBER 2015

60343417 05/11/15 LI www.aecom.com



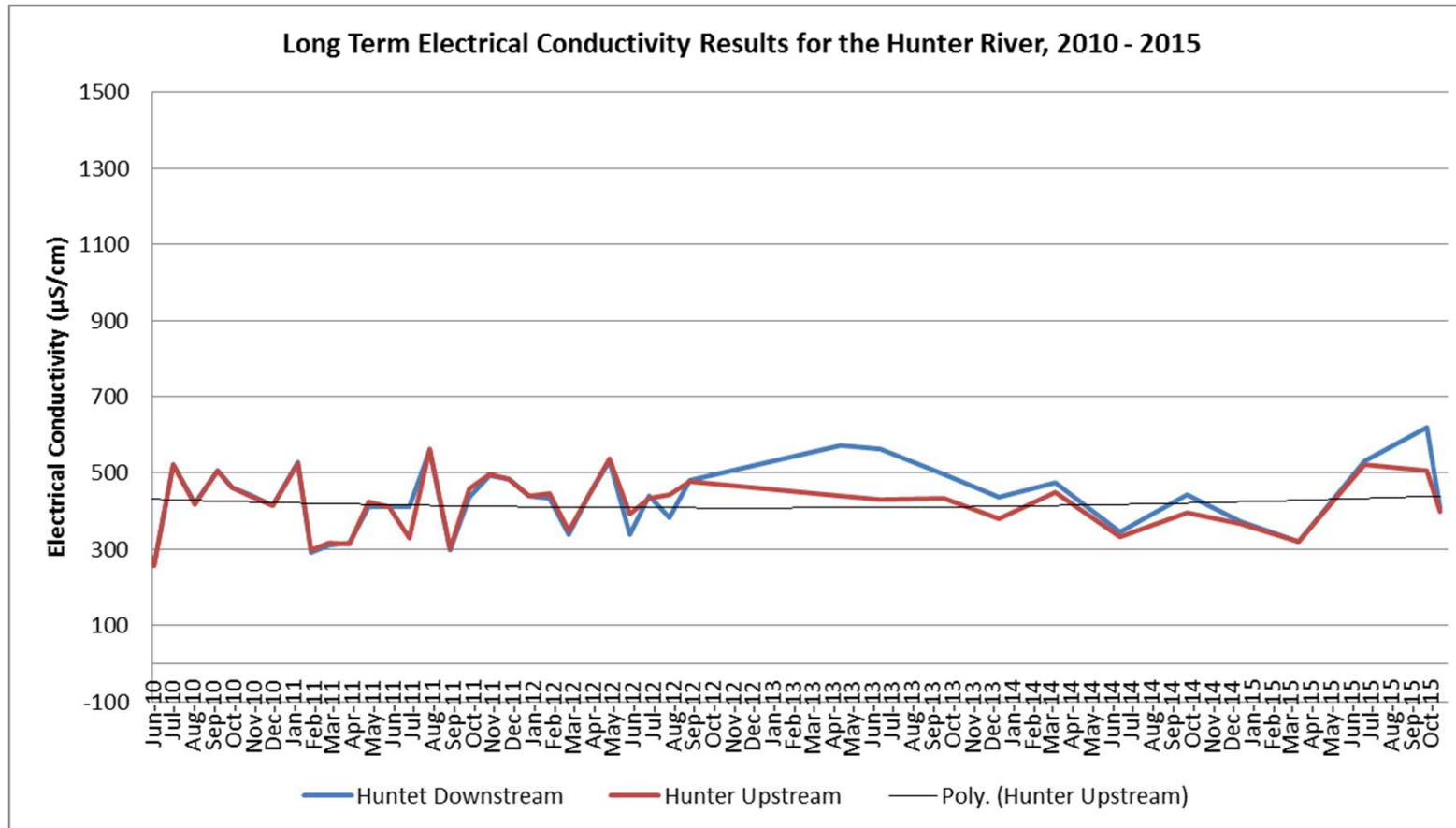
**Figure 1** Depositional Dust Contours - October 2015





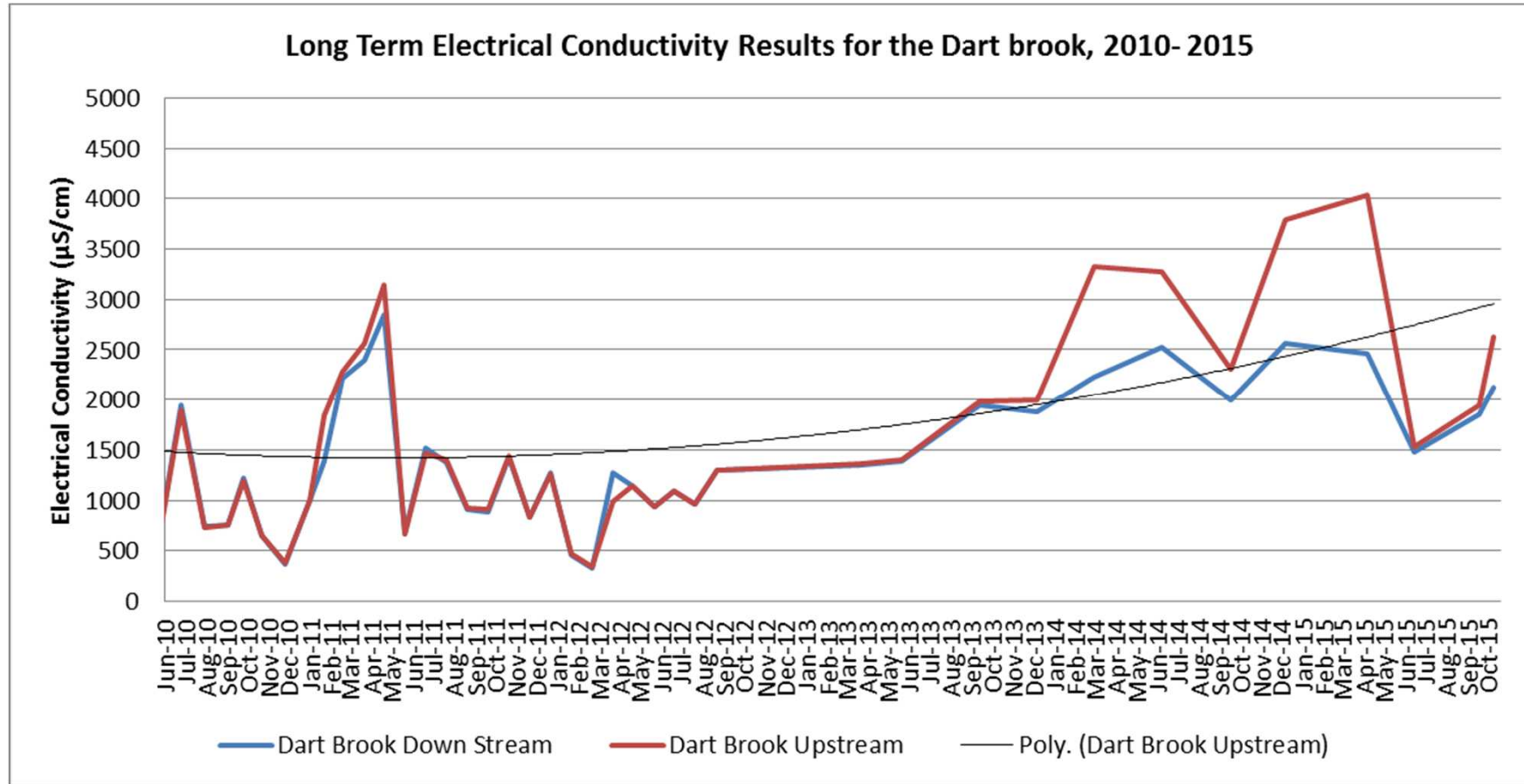


## SURFACE WATER SALINITY – HUNTER RIVER



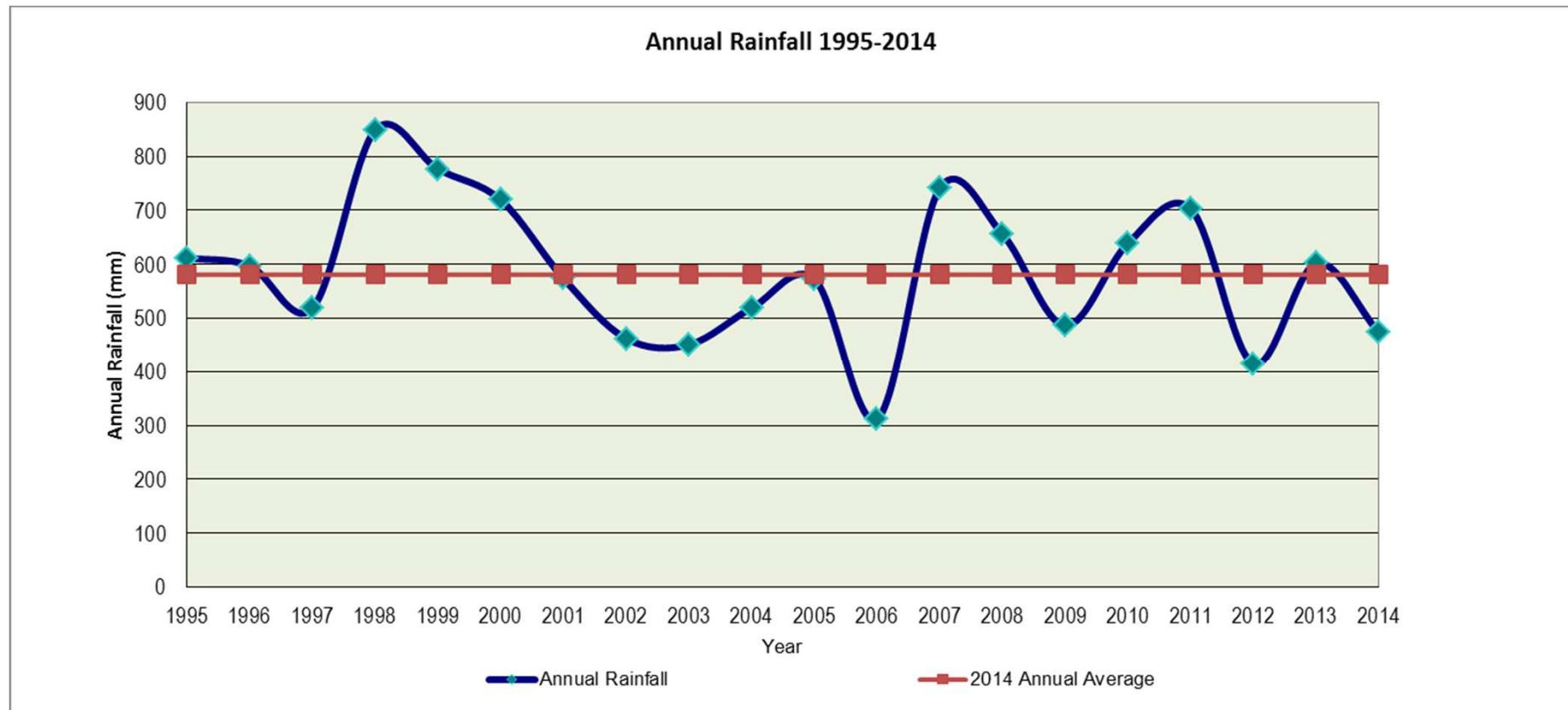
- Electrical Conductivity – reducing marginal difference between Hunter River sites upstream and downstream of the Mine
- Rationalised to three monthly sampling and analysis

## SURFACE WATER SALINITY – DART BROOK



- Electrical Conductivity – Upstream EC fluctuates with flow rates (influenced by rainfall) and downstream EC may be influenced by Hunter River flows.

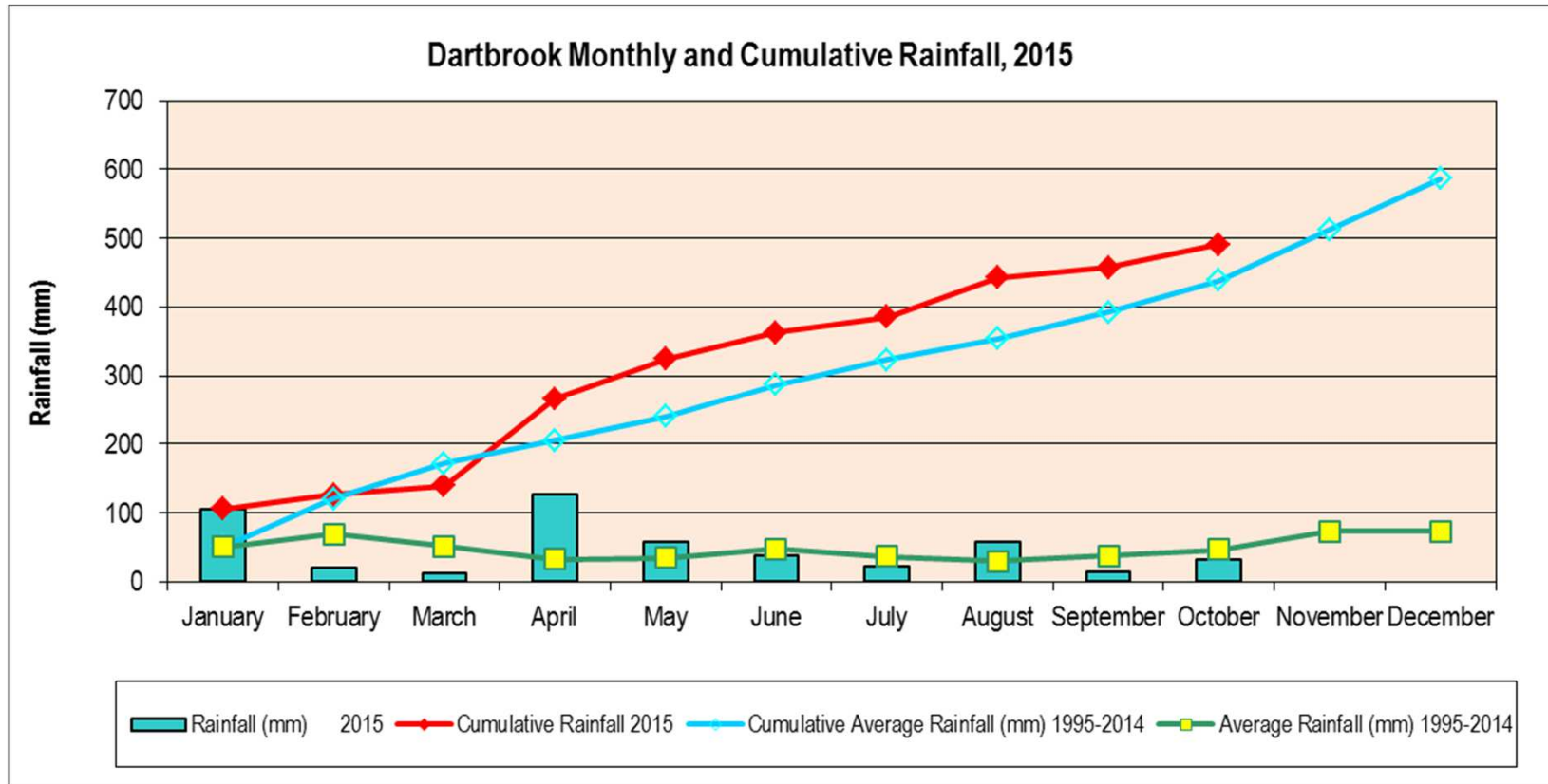
## METEOROLOGICAL DATA – life of mine annual average rainfall



1995 – 2013 average = 584mm

2014 = 473mm which was 112mm below annual average

## METEOROLOGICAL DATA



## **GENERAL BUSINESS - DARTBROOK ACTIVITIES**

---

- **Exploration – Nil since last meeting.**
  
- **Projects - Prefeasibility still suspended indefinitely.**
  
- **Care and Maintenance**
  - **Rural Lands – Ongoing**
  - **Regulatory – Ongoing**
  - **Community - Ongoing**

## **DARTBROOK CARE & MAINTENANCE – Rural Lands**

---

- **Fence repairs**
- **Hwy tree maintenance**
- **Weed control – African box thorn, Green Cestrum, Tiger pear, St Johns Wort and Prickly Acacia**





## **DARTBROOK CARE & MAINTENANCE – Rural**

■ **Pig & Roo control program continues. 2015 YTD**

**92 Roos. (NPWS licensed 300) & 29 pigs**

■ **Property maintenance including cemetery**

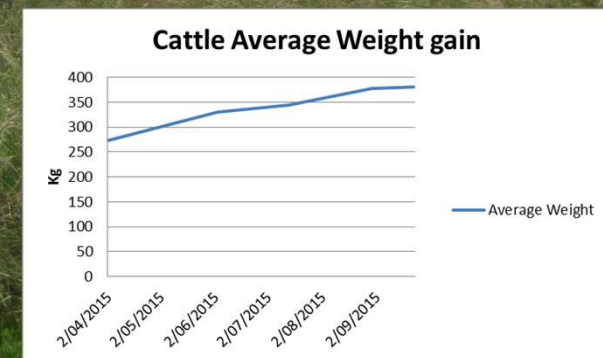


**Use CGM &/or HV Weed Control**



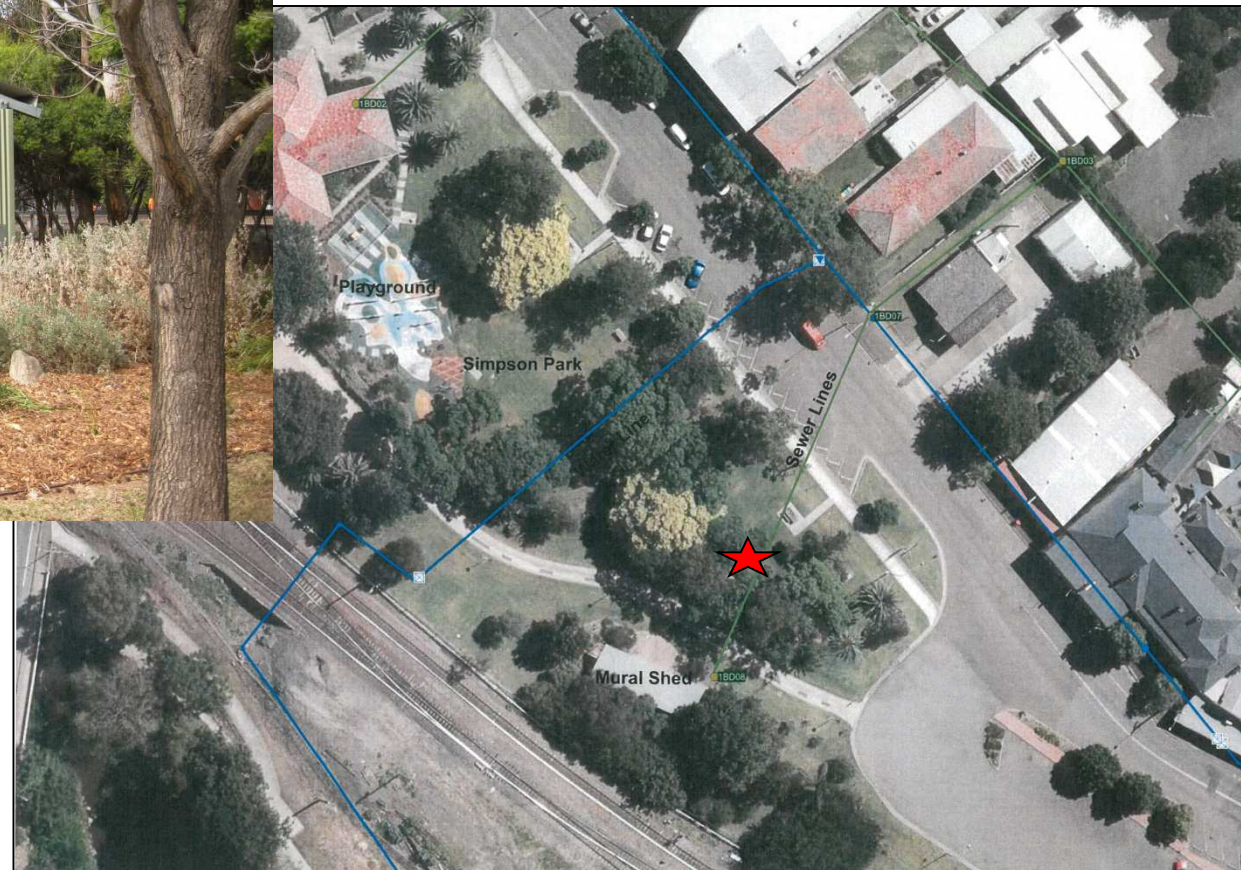
## DARTBROOK CARE & MAINTENANCE – Regulatory

- Sustainable grazing demonstration ongoing with regular weigh ins and pasture monitoring.
- LLS visits re river stabilisation including willow control.
- EPA EPL as amended (17 – 30 ML / day).
- DRE Annual inspection 10 September.
- DPE letter advising WMP is satisfactory.
- On going C&M including use of evaporation ponds
- A 256 EMR
- Desktop Emergency Exercise re pollution spill required for POEOA
- Annual REA geotechnical survey
- Bi annual RRG and Forestry biological survey.

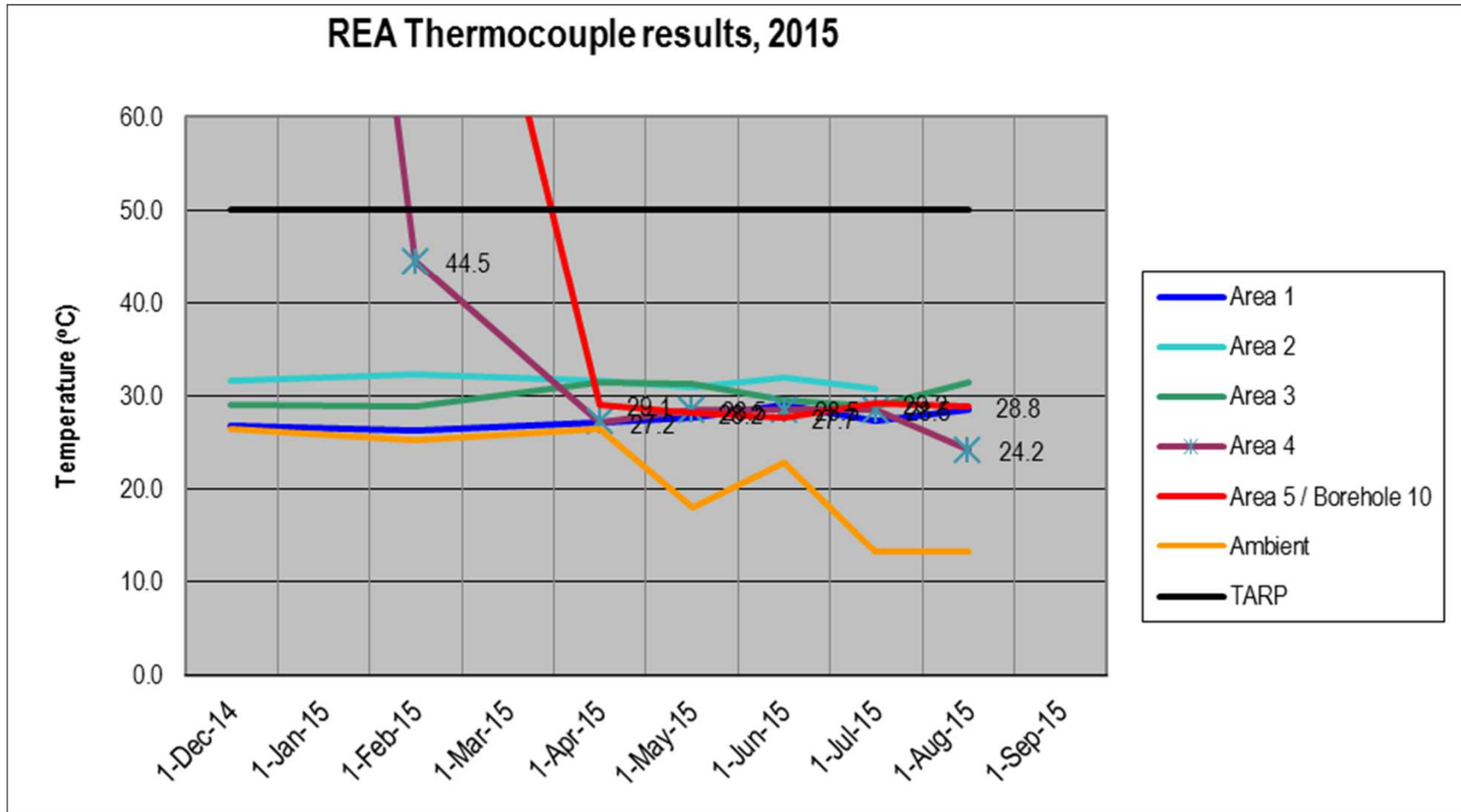


## DARTBROOK CARE & MAINTENANCE – Scar tree relocation

**Scar tree relocation onto non ARTC lands.**



## DARTBROOK CARE & MAINTENANCE – REA monitoring issue



## **ACTIONS FROM THE PREVIOUS MINUTES**

- To write to MSC seeking clarification re filling the MSC Staff Representative position.
- Galenia control at Dartbrook

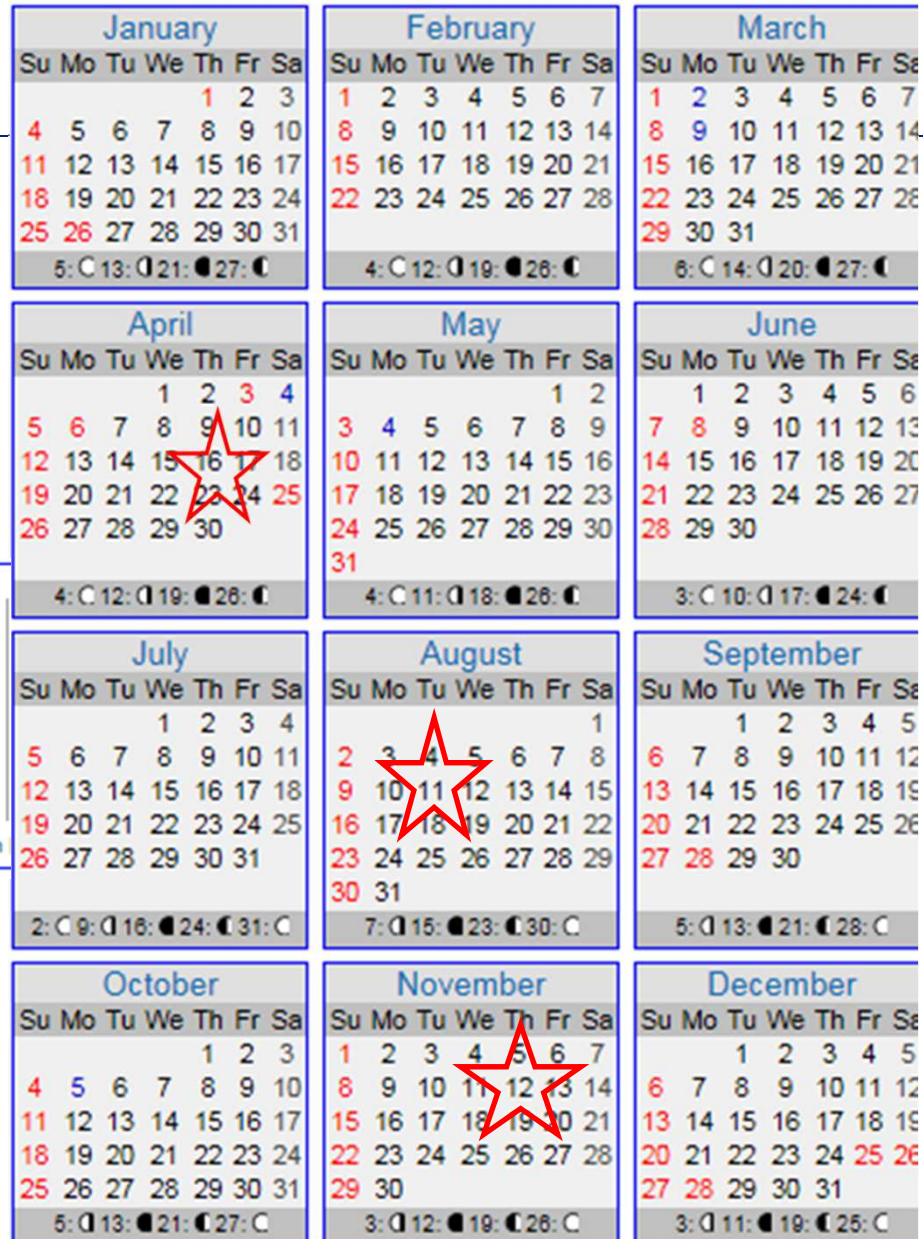
## **OTHER GENERAL BUSINESS**

- **Next Meeting & Communication.**



# Calendar for year 2015 (Australia)

## Suggested 2015 Meeting dates



**Holidays and Observances:**

1 Jan New Year's Day	4 Apr Holy Saturday (Many regions)
26 Jan Australia Day	5 Apr Easter Day (All)
2 Mar Labour Day (Western Australia)	6 Apr Easter Monday
9 Mar Labour Day (Victoria)	25 Apr Anzac Day
9 Mar Eight Hours Day (Tasmania)	4 May May Day (Northern Territory)
21 Mar Harmony Day	8 Jun Queen's Birthday (Most regions)
3 Apr Good Friday	28 Sep Queen's Birthday (Western Australia)

Add more holidays/observances: [Local holidays](#) | [Major Jewish](#) | [Major Muslim](#)

- 5 Oct Labour Day (Many regions)
  - 11 Nov Remembrance Day
  - 24 Dec Christmas Eve
  - 25 Dec Christmas Day
  - 26 Dec Boxing Day
  - 28 Dec Christmas/Boxing Day Holiday
  - 31 Dec New Year's Eve
- Common observances

## 2016 Meeting dates

### 2016

January							February							March							April						
Sun	Mon	Tue	Wed	Thu	Fri	Sat	Sun	Mon	Tue	Wed	Thu	Fri	Sat	Sun	Mon	Tue	Wed	Thu	Fri	Sat	Sun	Mon	Tue	Wed	Thu	Fri	Sat
					1	2	1	2	3	4	5	6			1	2	3	4	5						1	2	
3	4	5	6	7	8	9	7	8	9	10	11	12	13	6	7	8	9	10	11	12	3	4	5	6	7	8	9
10	11	12	13	14	15	16	14	15	16	17	18	19	20	13	14	15	16	17	18	19	10	11	12	13	14	15	16
17	18	19	20	21	22	23	21	22	23	24	25	26	27	20	21	22	23	24	25	26	17	18	19	20	21	22	23
24	25	26	27	28	29	30	28	29						27	28	29	30	31	24	25	26	27	28	29	30		
31																											

May							June							July							August						
Sun	Mon	Tue	Wed	Thu	Fri	Sat	Sun	Mon	Tue	Wed	Thu	Fri	Sat	Sun	Mon	Tue	Wed	Thu	Fri	Sat	Sun	Mon	Tue	Wed	Thu	Fri	Sat
1	2	3	4	5	6	7				1	2	3	4						1	2							
8	9	10	11	12	13	14	5	6	7	8	9	10	11	3	4	5	6	7	8	9	7	8	9	10	11	12	13
15	16	17	18	19	20	21	12	13	14	15	16	17	18	10	11	12	13	14	15	16	14	15	16	17	18	19	20
22	23	24	25	26	27	28	19	20	21	22	23	24	25	17	18	19	20	21	22	23	21	22	23	24	25	26	27
29	30	31					26	27	28	29	30			24	25	26	27	28	29	30	28	29	30	31			
													31														

September							October							November							December						
Sun	Mon	Tue	Wed	Thu	Fri	Sat	Sun	Mon	Tue	Wed	Thu	Fri	Sat	Sun	Mon	Tue	Wed	Thu	Fri	Sat	Sun	Mon	Tue	Wed	Thu	Fri	Sat
				1	2	3						1			1	2	3	4	5					1	2	3	
4	5	6	7	8	9	10	2	3	4	5	6	7	8	6	7	8	9	10	11	12	4	5	6	7	8	9	10
11	12	13	14	15	16	17	9	10	11	12	13	14	15	13	14	15	16	17	18	19	11	12	13	14	15	16	17
18	19	20	21	22	23	24	16	17	18	19	20	21	22	20	21	22	23	24	25	26	18	19	20	21	22	23	24
25	26	27	28	29	30		23	24	25	26	27	28	29	27	28	29	30			25	26	27	28	29	30	31	
							30	31																			

**THANK  
YOU**