



PACIFIC  
ENVIROMIN  
LIMITED

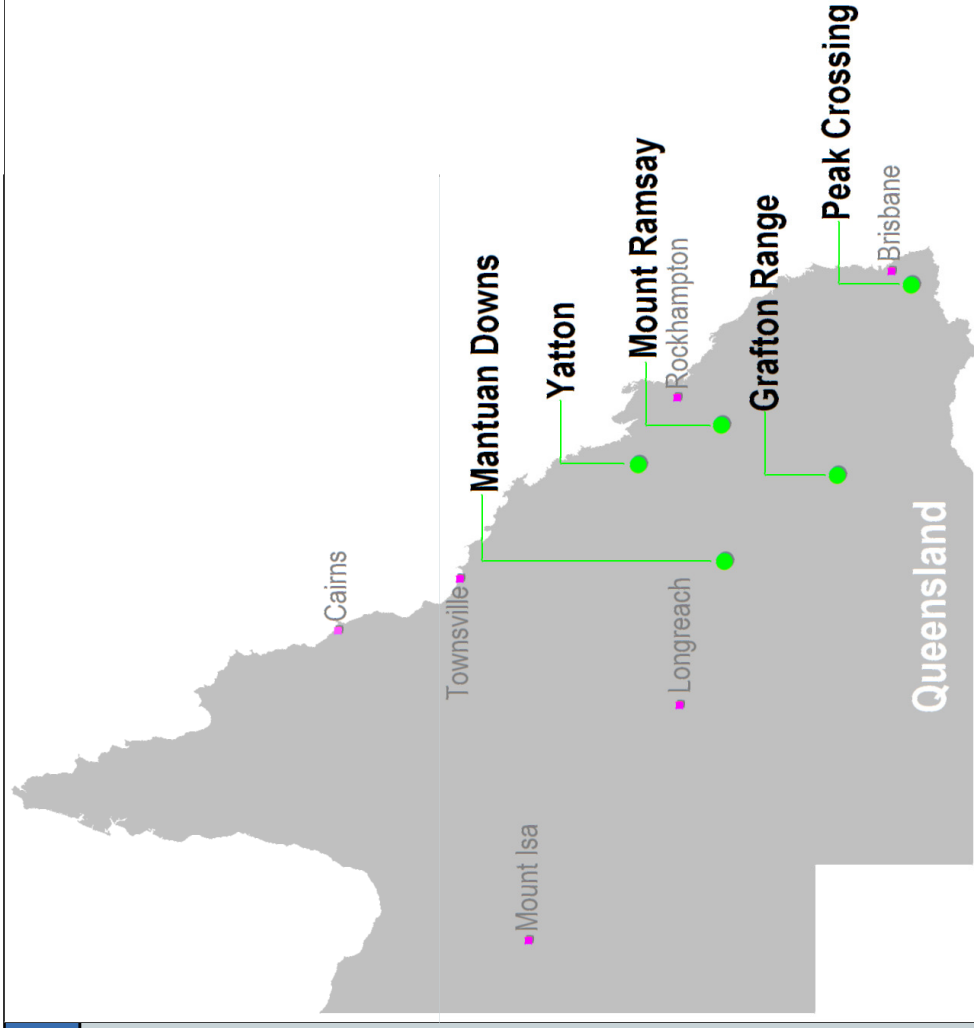
2007

PEV PRESENTATION



## Industrial Mineral Projects

- Mantuan Downs - Bentonite
- Yatton – Rare Earths
- Mount Ramsay – Nepheline Syenite
- Grafton Range – Sodium Bicarbonate (acquisition subject to due diligence)
- Peak Crossing - Dolomite



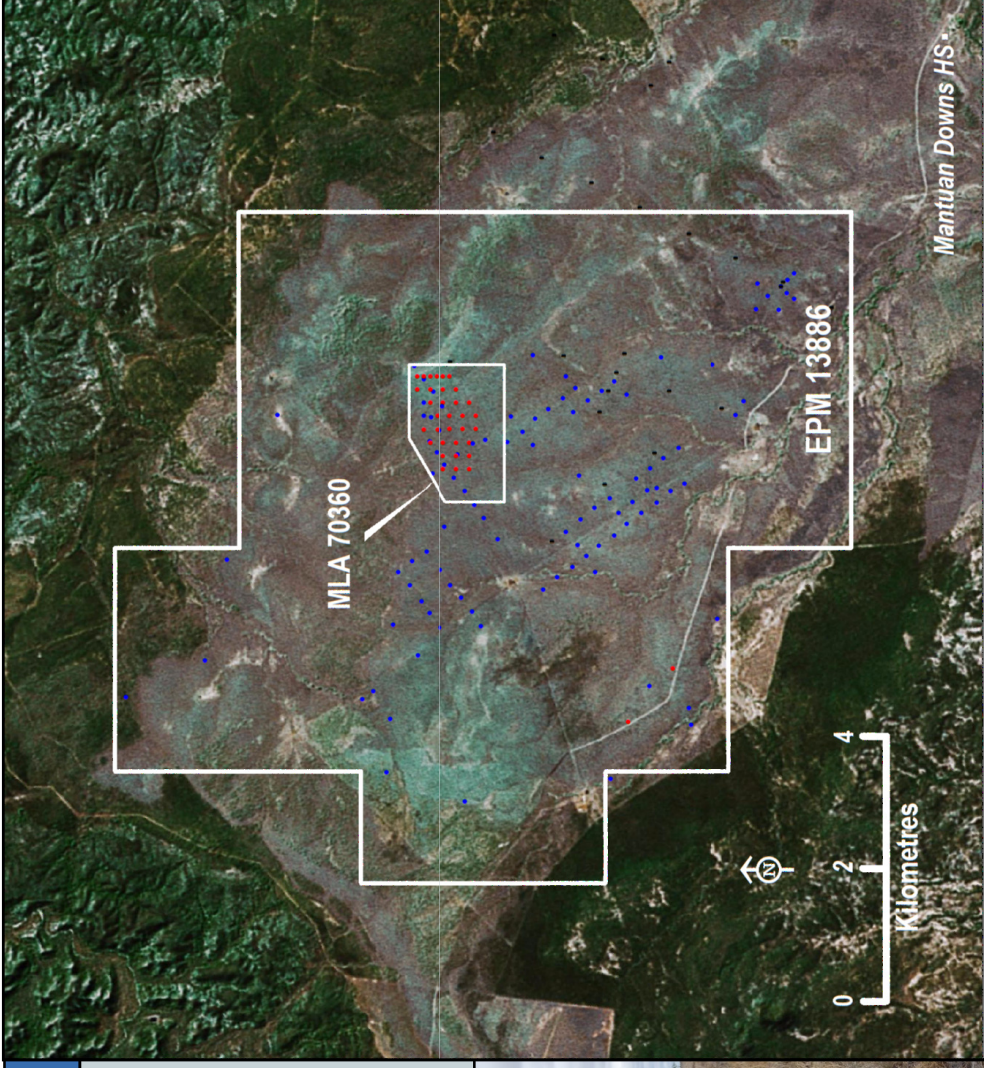
## Location Map

- 100% PEV
- 100 km west of Springsure
- Large calcium bentonite resource

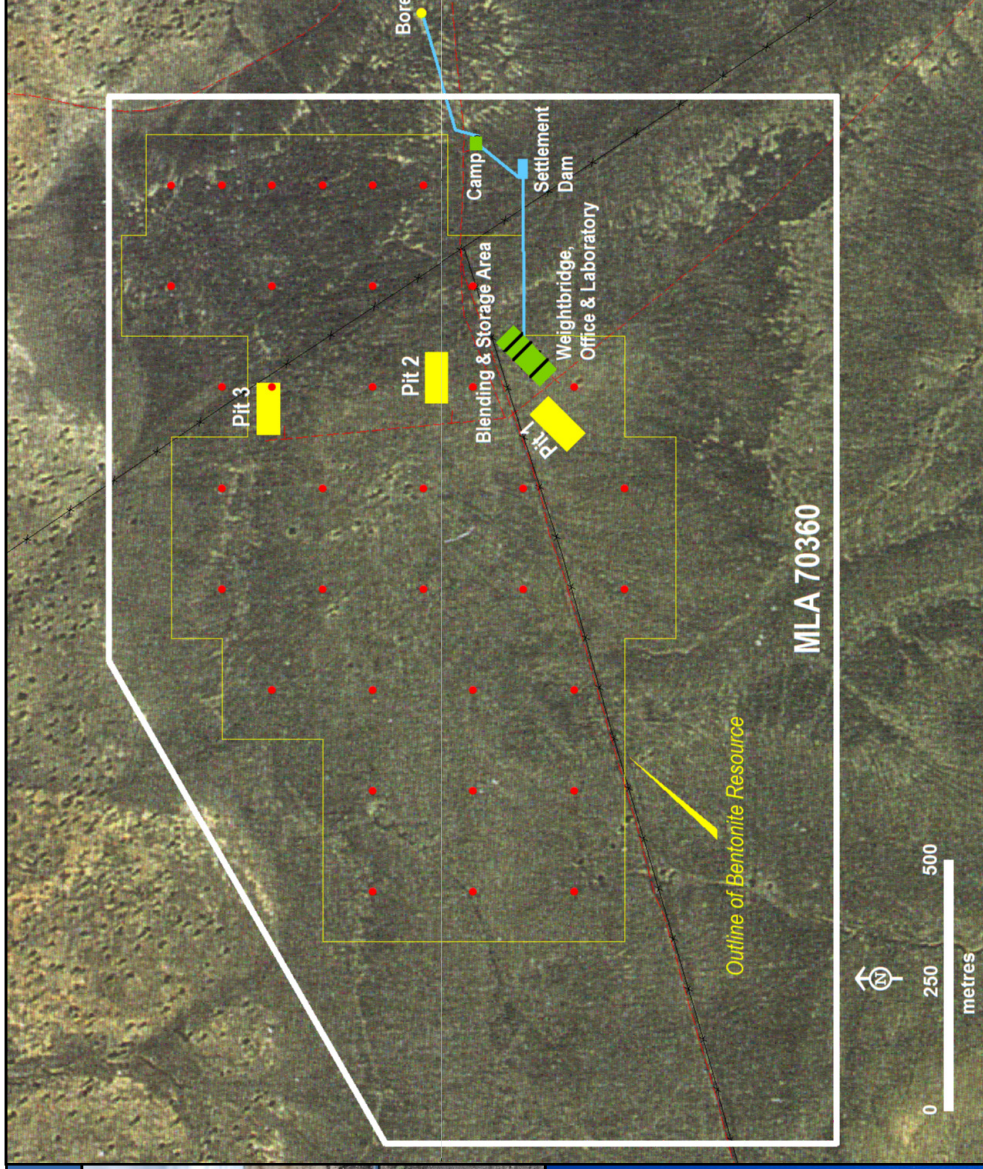


## Tenement Map

- Exploration Permit for Minerals (EPM) 13886 – 86 km<sup>2</sup>
- Mining Lease Application (MLA) 70360 – 274.3 ha



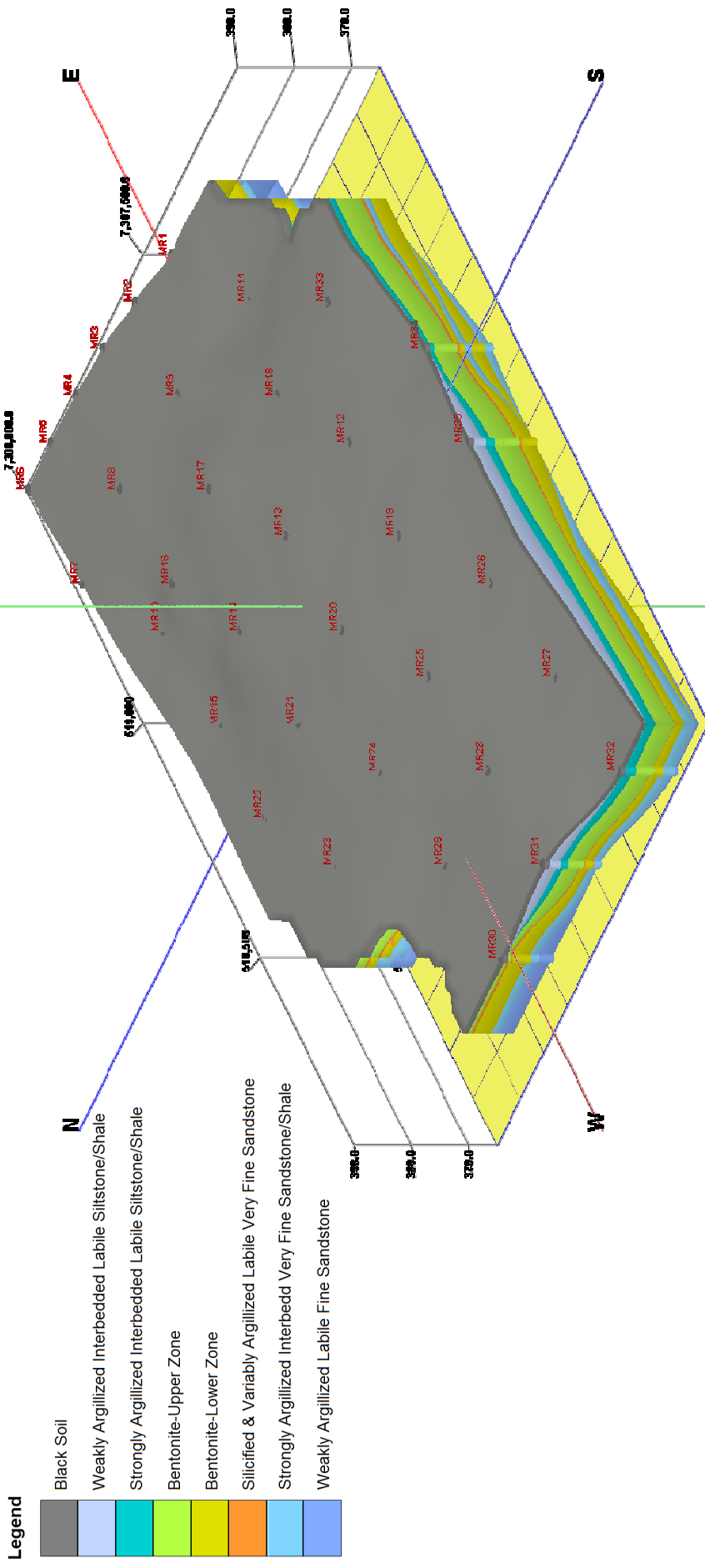
## Proposed Mine Areas



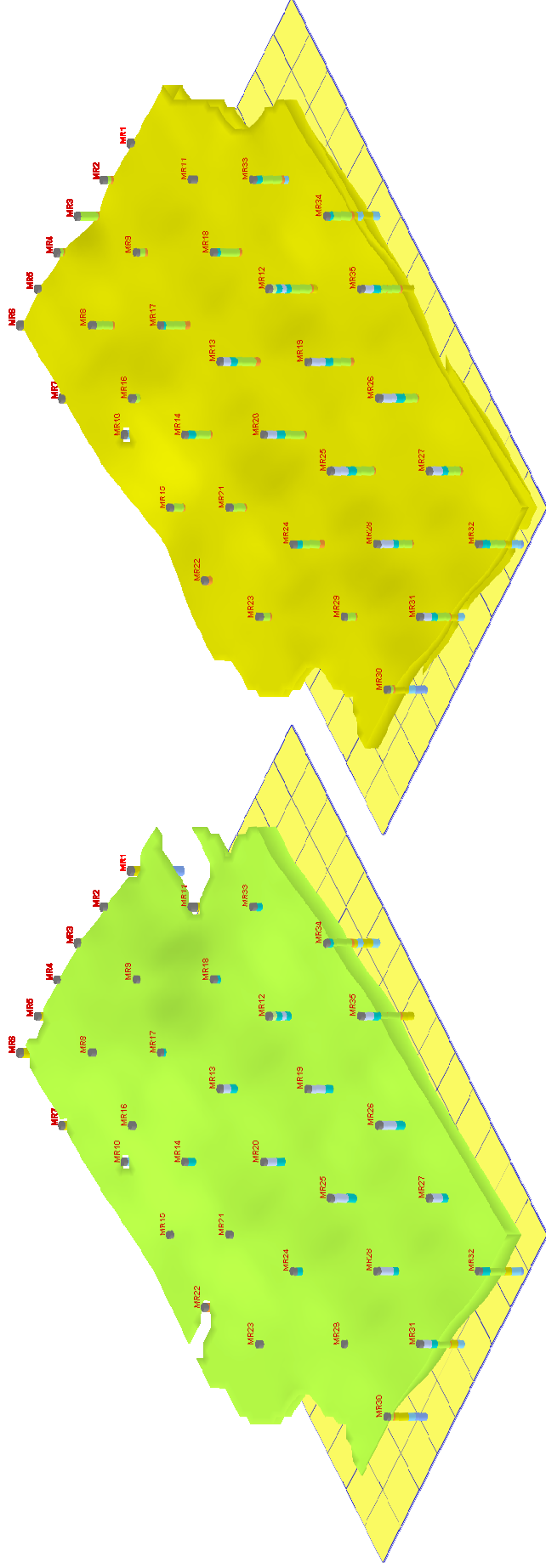
# MANTUAN DOWNS



# MANTUAN DOWNS – 3D Geology (x 10 vertical exaggeration)



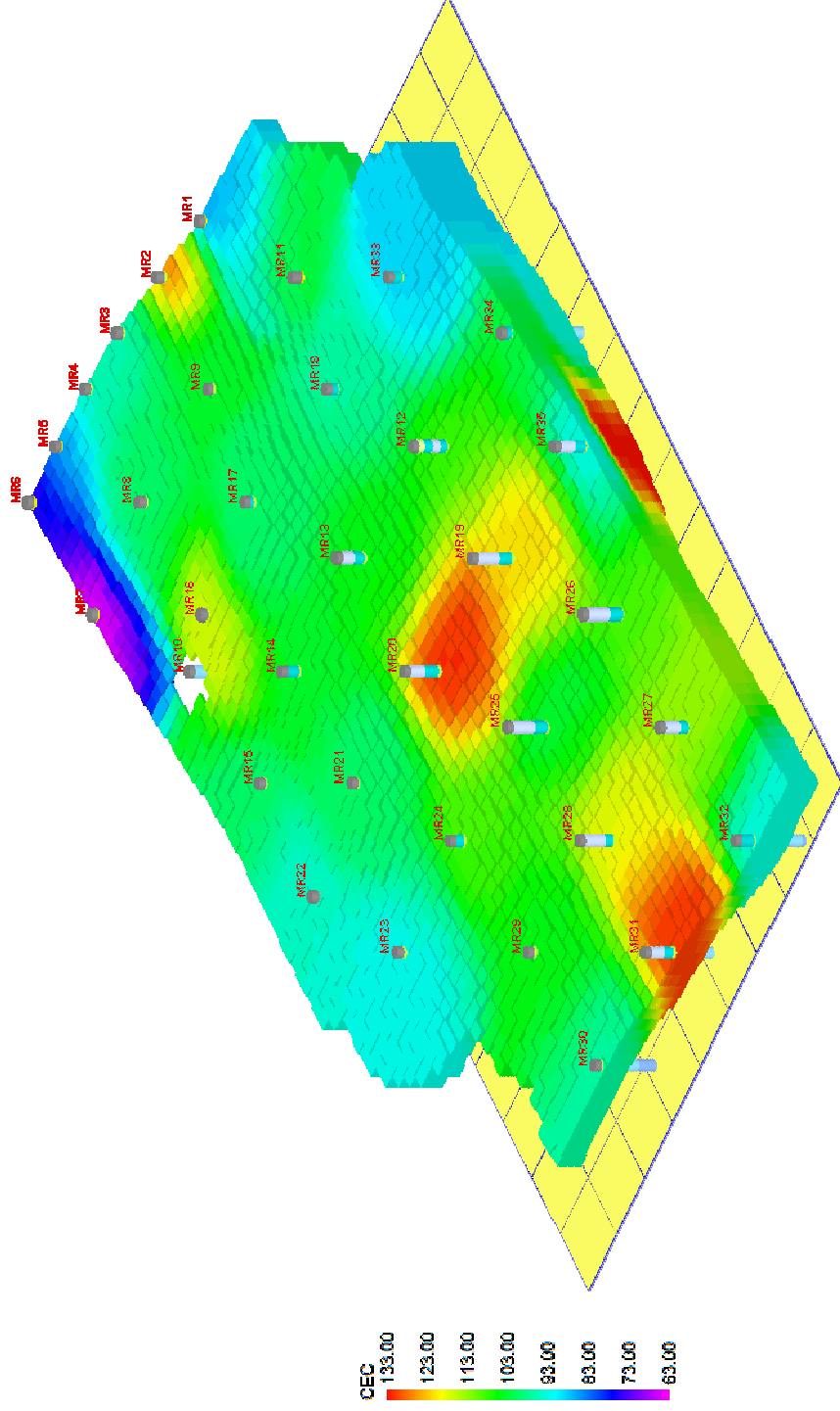
**MANTUAN DOWNS – Upper & Lower Bentonite Seams (x 10 vertical exaggeration)**



**Upper Bentonite Seam**

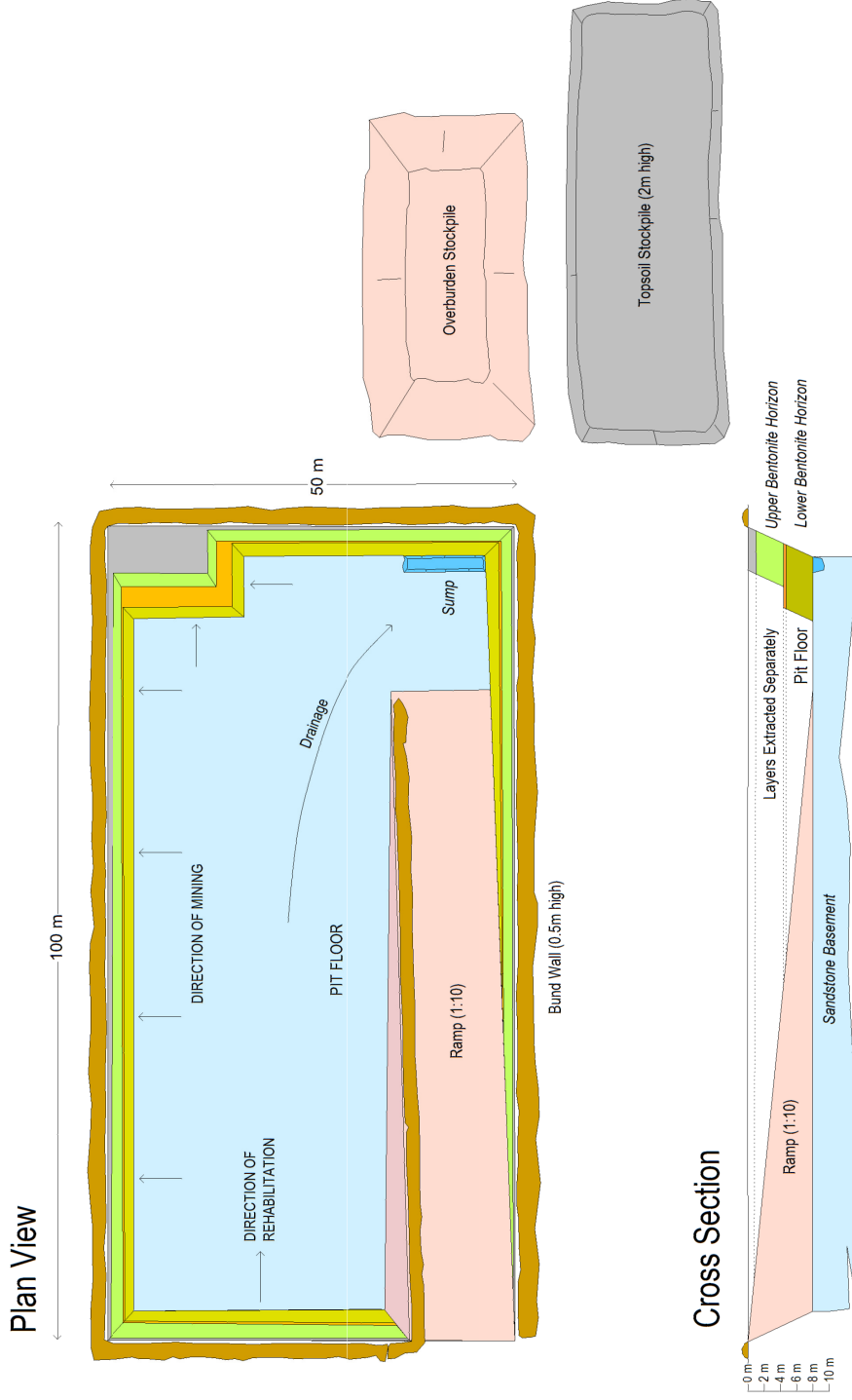
**Lower Bentonite Seam**

**MANTUAN DOWNS - Grade > 63 CEC (x 10 vertical exaggeration)**





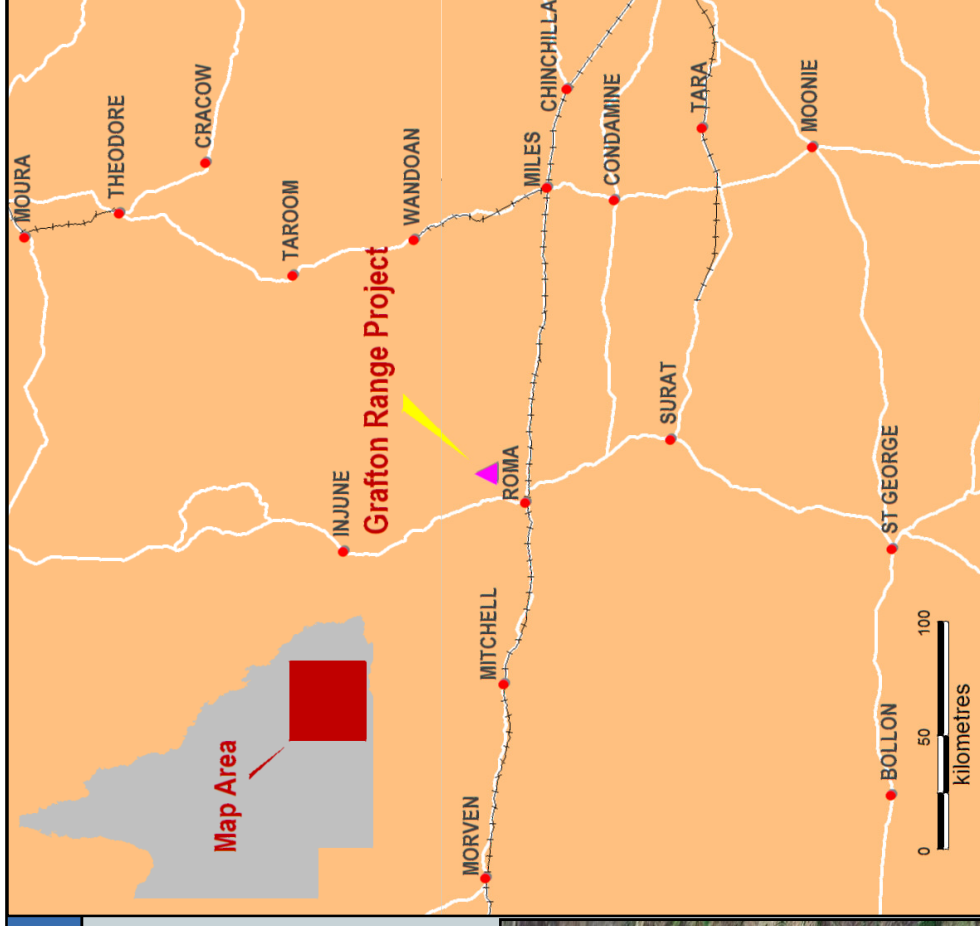
# Mantuan Downs - Conceptual Open Pit



## Location Map

- 10.5 km northeast of Roma
- 435 km west of Brisbane
- Large sodium bicarbonate resource
- Acquisition subject to due diligence

Grafton Range Project



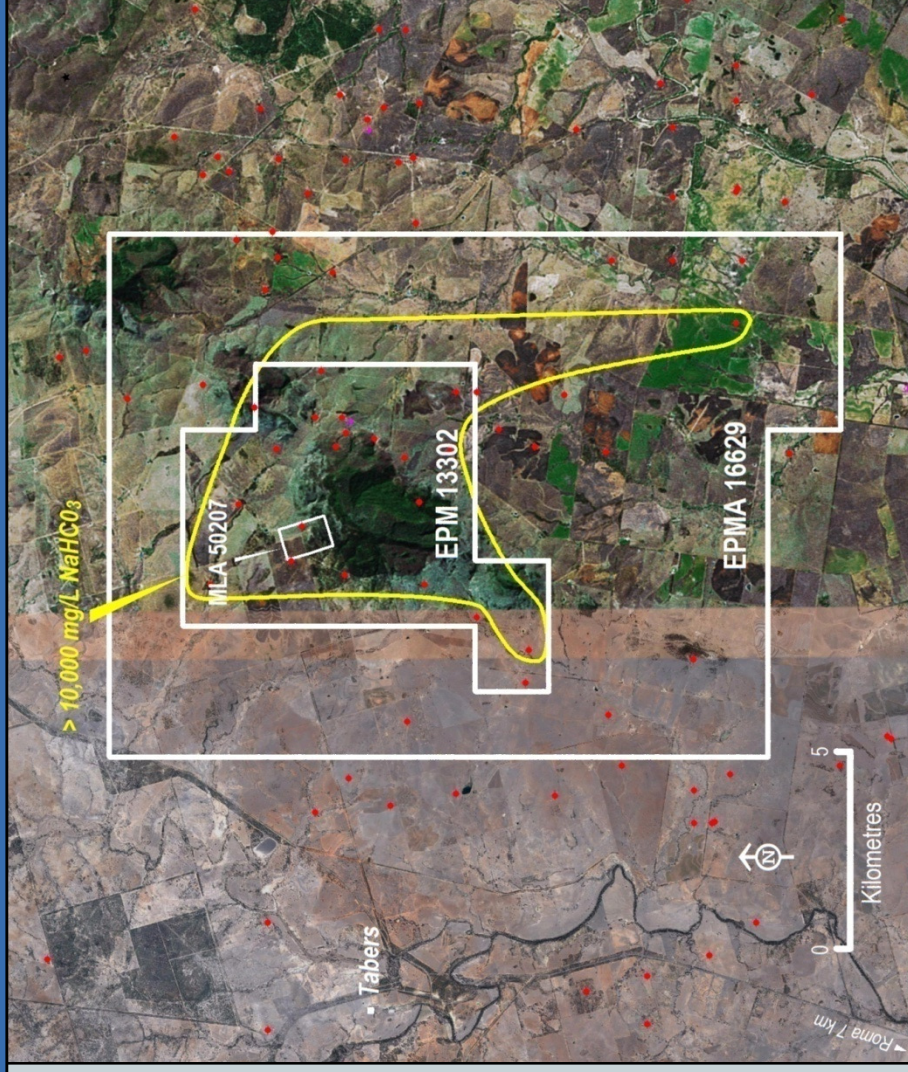
## Tenement Map

- EPM 13302 – 17 sub blocks (52.3 km<sup>2</sup>)
- EPMA 16629 – 58 sub blocks (178.4 km<sup>2</sup>)
- Mining Lease Application (MLA) 50207 – 99 ha

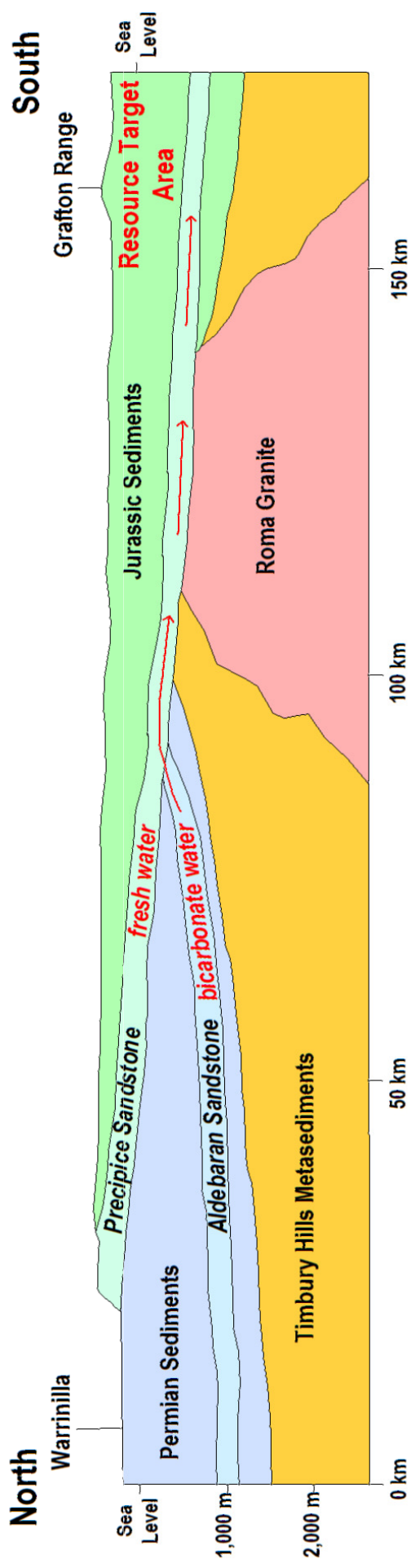


## Outline of NaHCO<sub>3</sub> Brine

- High salinity brine in Jurassic Precipice Sandstone
- Brine contains > 14,000 mg/l (14 kg/m<sup>3</sup> L) of sodium bicarbonate



## Diagrammatic Cross-Section Warrinilla to Grafton Range



# GRAFTON RANGE